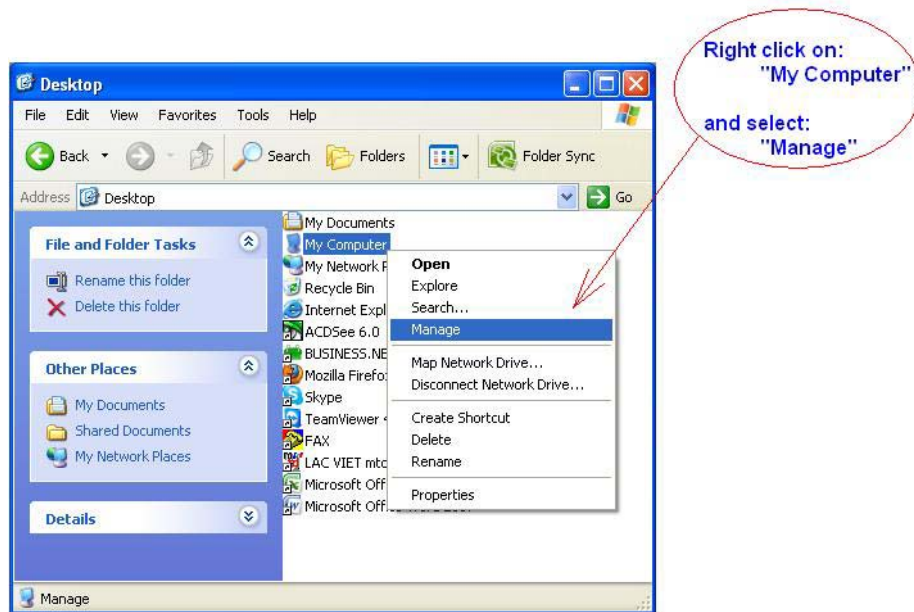


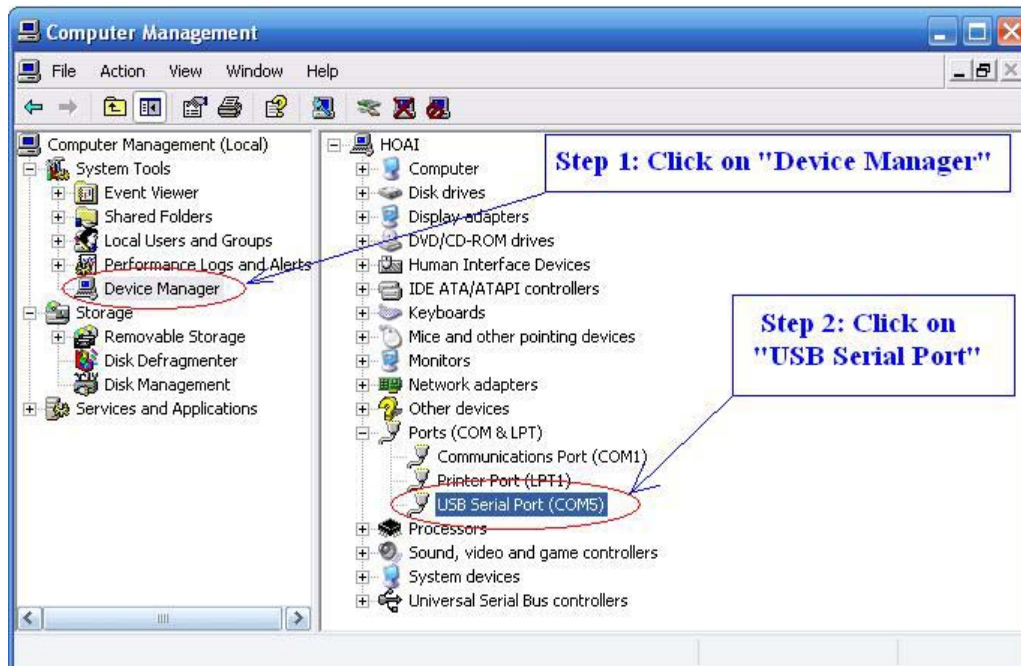
ADVANCED PLOTTING DEVICES

Set COM Port for APD/ANAGraph Plotters on WindowsXP

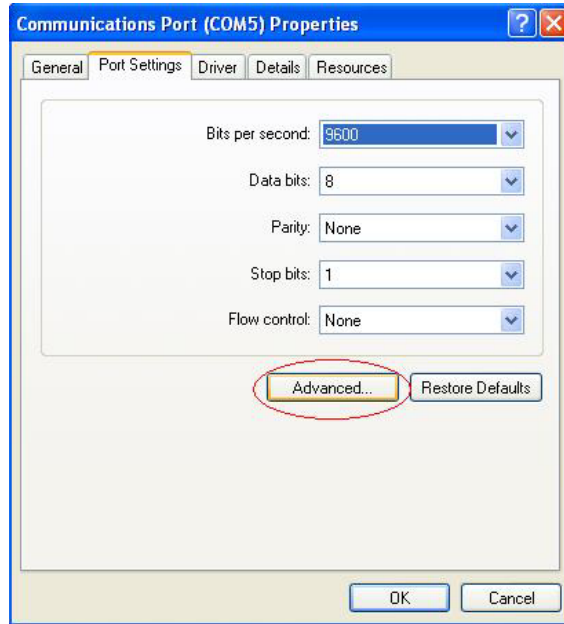
- Go to desktop, right click on “My Computer” and select “Manage”:



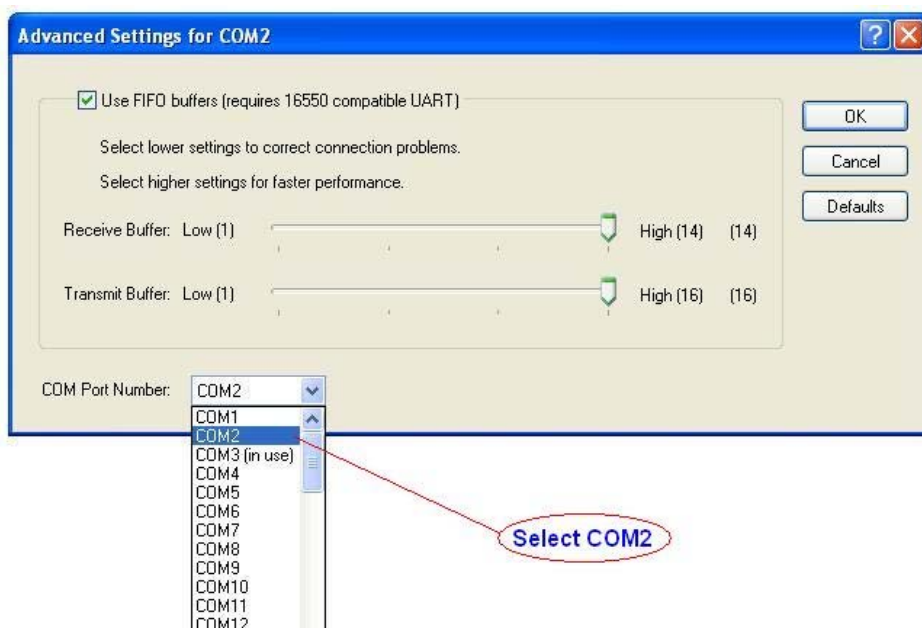
- When **Computer Management**'s panel was showed, click on “**Device Manager**” and then double click on “**USB Serial Port**” to open communications port properties:



- And then click on **“Advanced”** to open advanced settings for COM port:



- Click on **“COM Port Number”**, select **“COM2”** and click **“OK”** to continue:



➤ And you will see COM port on your computer as follows:

