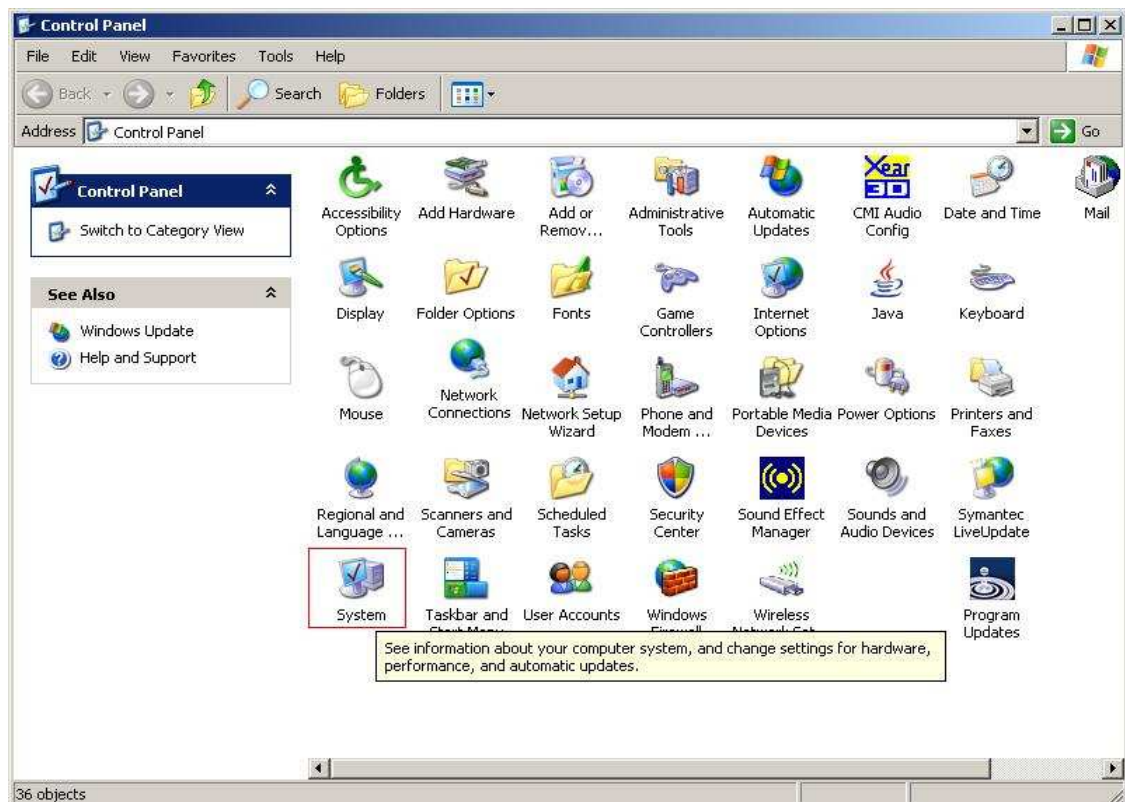


How to change communication port

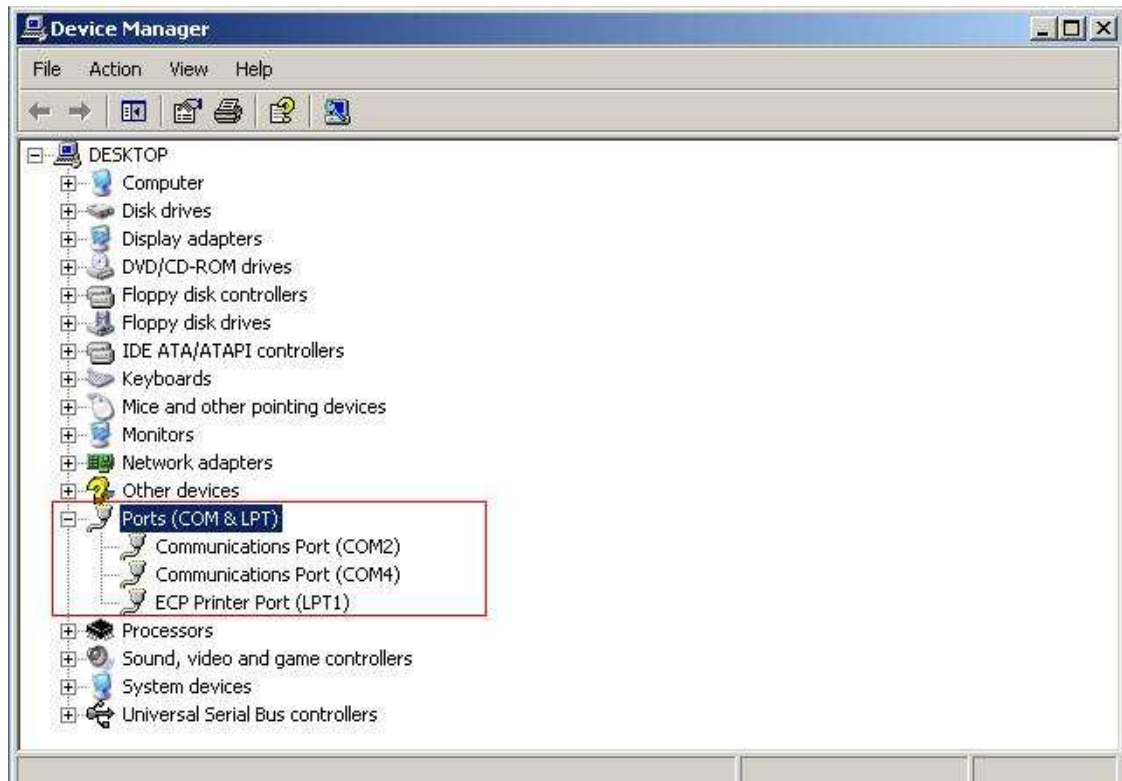
- This instruction will help you to change the port number on your communication port (ex: com 1 to com2.....).

- 1) Go to your computer's **Control Panel** and double click on **System**. (See the picture below)

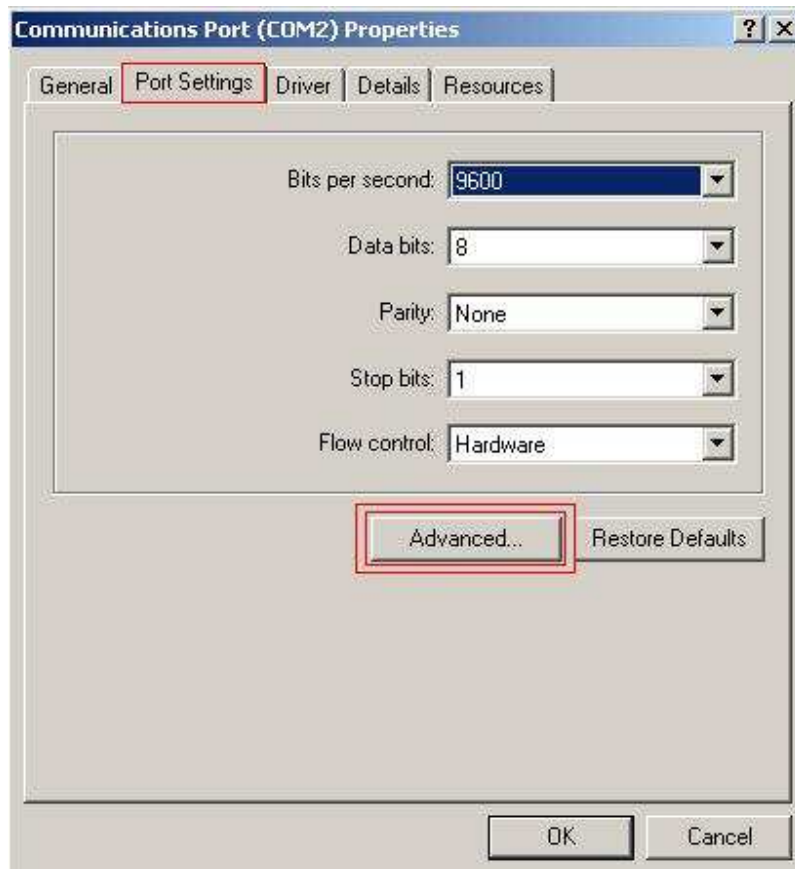


- Look for the indicated **red box**

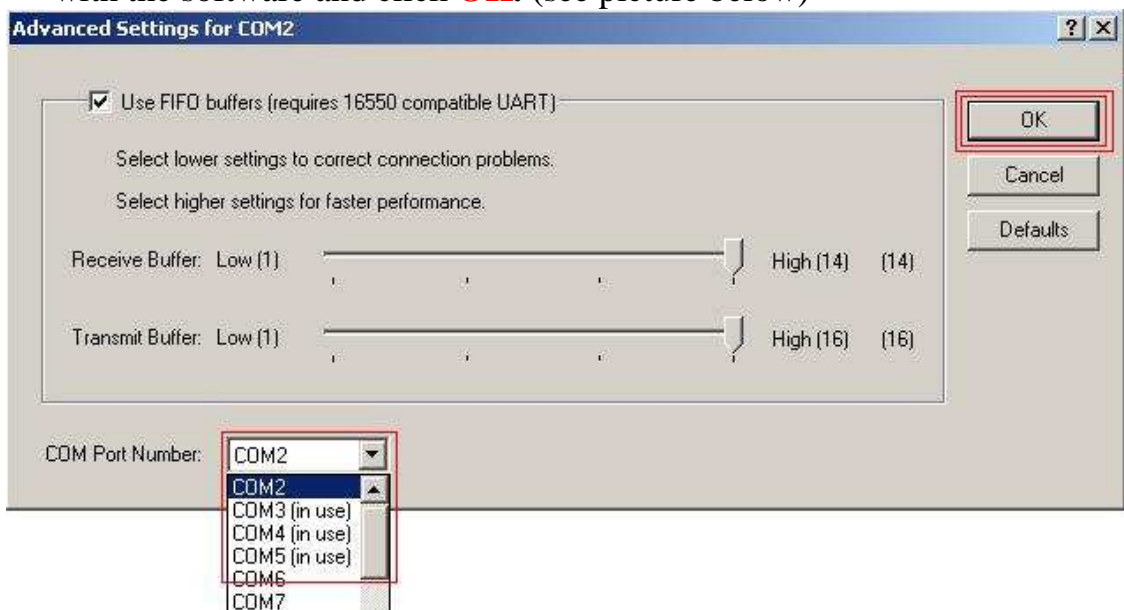
- 2) Double click on **port (Com and LPT)** and select the communication that you want to change. (see picture below)



- 3) Right click and go to **properties** of that communications Port that you want to change.
- 4) Select **Port Settings** and click on **Advanced**.(see picture below)



5) In Advanced mode, you can change the com number that compatible with the software and click **OK**. (see picture below)



6) Restart your computer and ready to do communication set up in the software

